



**SCL**  
**CONTROL SOFTWARE**

**Version 2.03**

**MRC AUDIO    LD- 500**

## Content

- 1 - [Welcome to MRC AUDIO SCL v1.3](#)
- 2 - [Software Installation](#)
- 3 - [Using SCL v1.3](#)

## 1 - Welcome to MRC AUDIO SCL v1.3

### Introduction

Welcome to MRC LD-500 Control Software. This software is used to setup any LD-500 with 1,8 or later firmware version and manage the stored data during its use, for a total control of the activity in the places where it is installed.

In the following sections are described the necessary steps for installing and subsequently controlling the equipment.

For further information, please, don't hesitate to contact us



Cavanilles, 50 – 5ª A  
28007 MADRID-SPAIN  
Phone: 915 529 138  
Fax : 915 018 399  
Email: [info@mrcaudio.com](mailto:info@mrcaudio.com)  
Web: [www.mrcaudio.com](http://www.mrcaudio.com)

## 2 - Software Installation

Please, read carefully these instructions before install software.

Insert the disk into the CD driver of computer. If it does not start automatically, please double click on the Setup.exe file to initiate program installation or on the Launcher file to show the Navigate window in different languages.

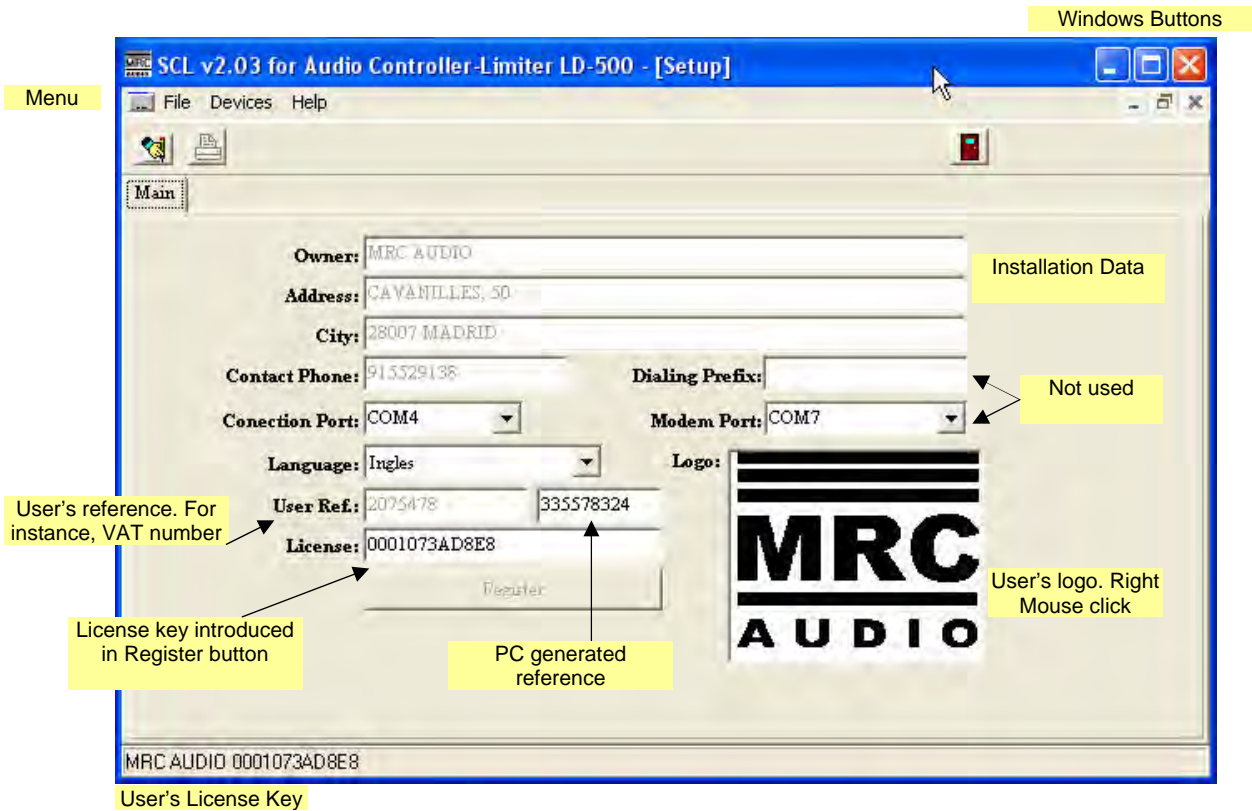
By default, the installation will begin on the directory C:\Archivos de Programa\MRC AUDIO\LD-500. Please, follow the instructions of the install program.

## 3 - Using SCL v1.3


At starts you see the next window:



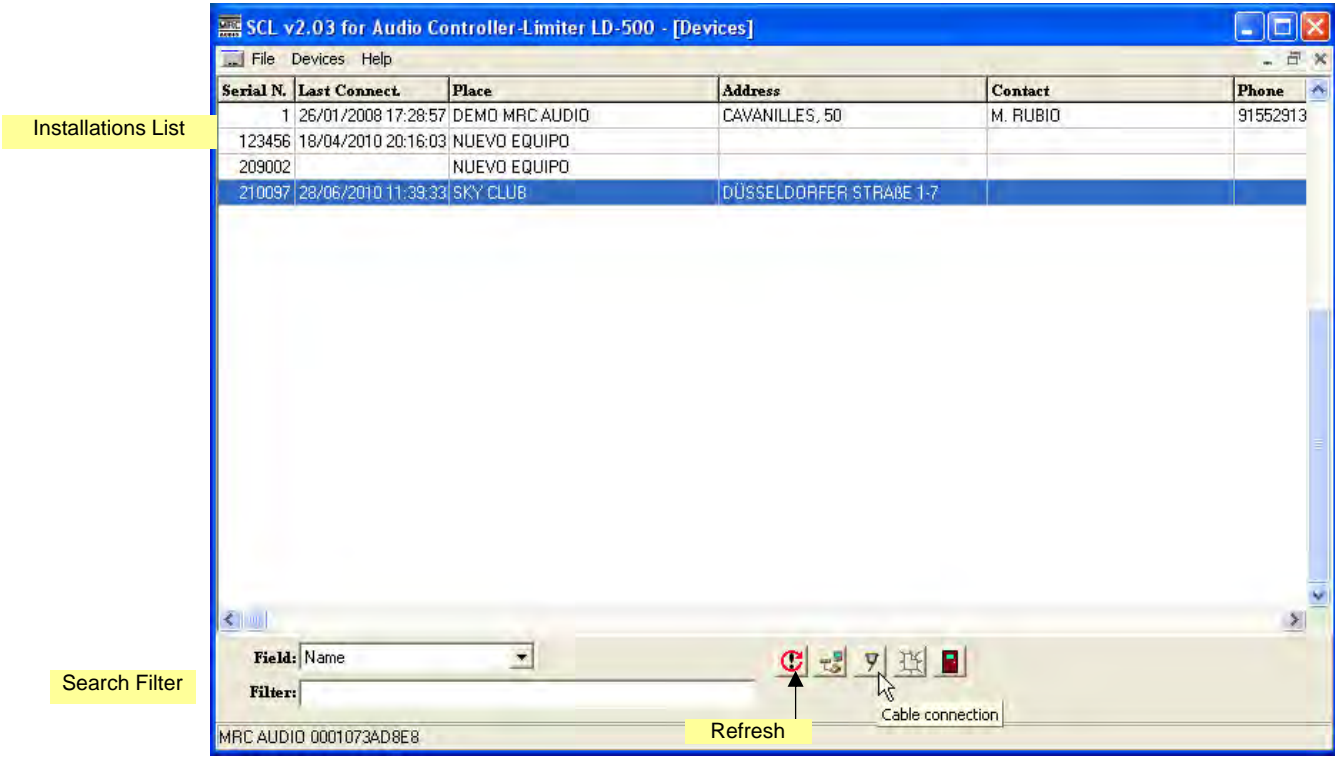
Select **File > Setup** to configure the program and register it as user organization. When appears the following screen, we will write all the user's data, even your company logo for identification in further reports. In order to access programming without restrictions, you must obtain a license number from the manufacturer that will be useful only for a unique PC and user. Next, select the appropriate port for cable communication.



For activating the software you must give to the manufacturer a user's reference (any number or name) and the number in right side generated internally for this only computer. The manufacturer return to you a license key that must be introduced in a new window appears when press Register button.

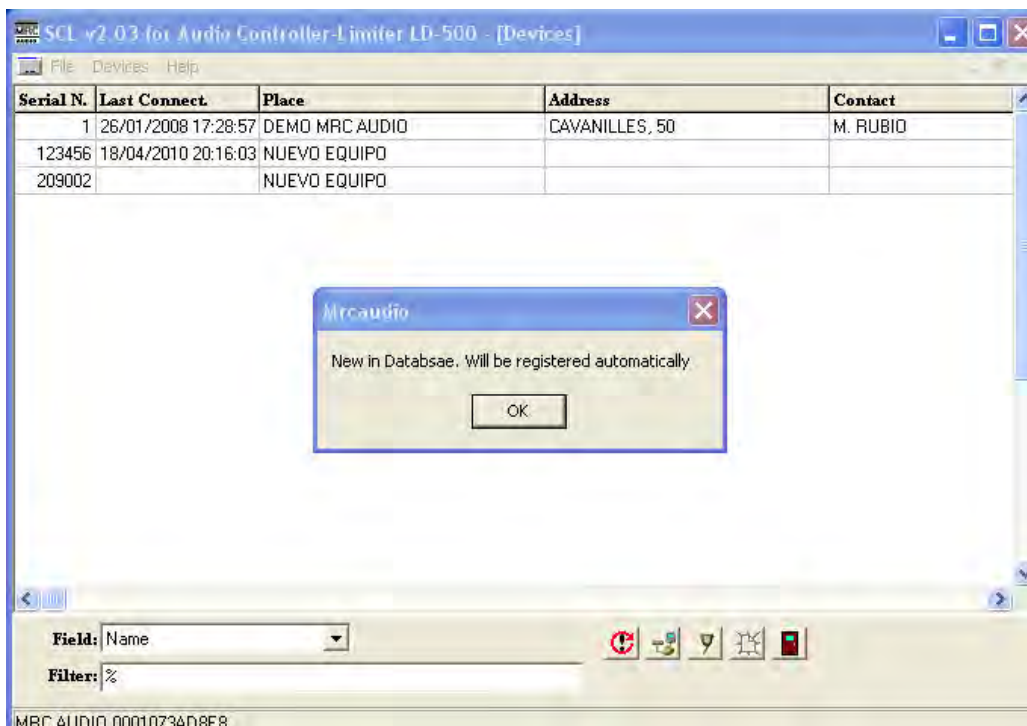
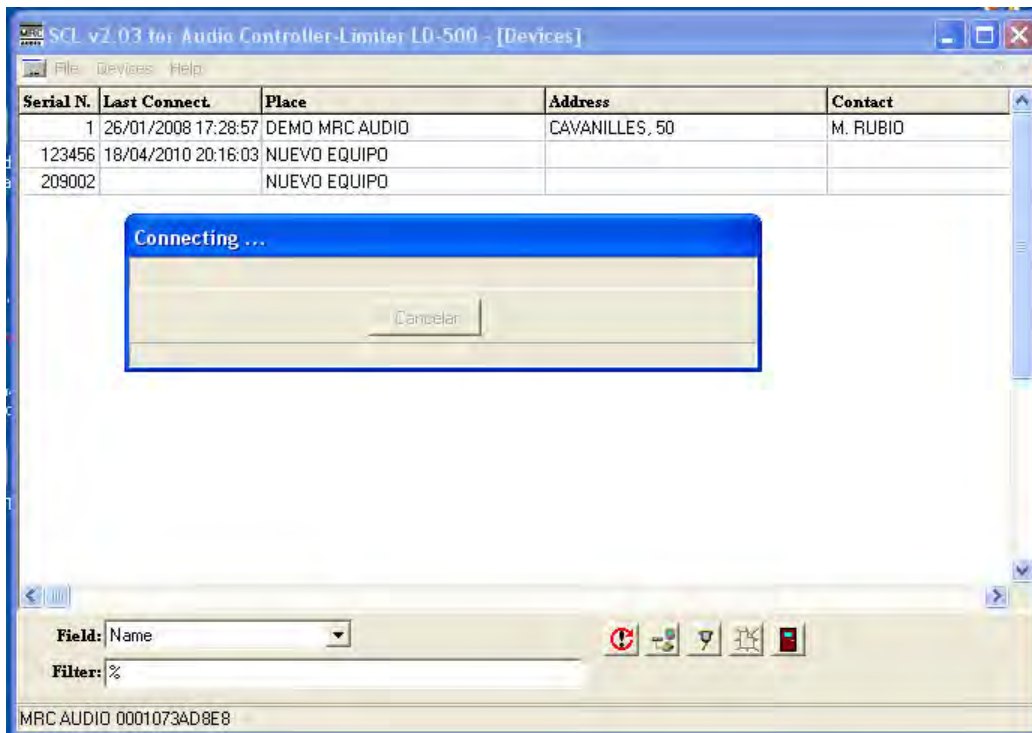
Once registered, please save data closing by means  icon. When you reopen the application it's ready for operating and you can see the license key in down left corner.

Now we proceed to connect to the limiter. First open the menu **Devices** and appears all equipments registered in our database. You can choose the desired one in list or simply press the Cable connection icon and itself find the number that match with the connected unit.

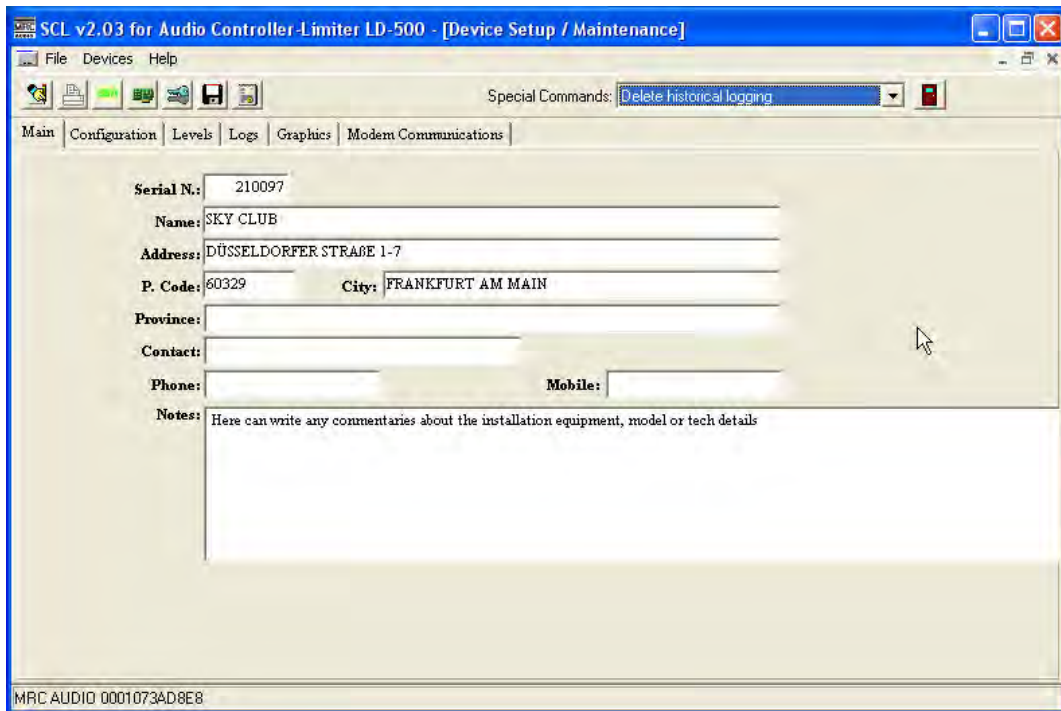


If this device is connected at first time to this database, the software advice that it's not registered, and then offers the possibility to update it. If already had been connected before, it will open automatically the file of this device.

You can also use a word filter search to find a determined device among a long list of devices.

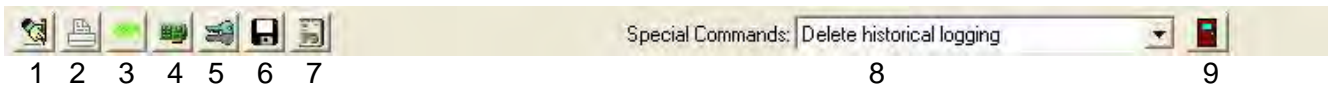


After complete connection opens the file corresponding to this device in your database. Now can edit all data about this installation and collect data from limiter.



In the next windows we can control all parameters for adequate operation in each location. Any change we try, the limiter ask for a keycode. This code is by default 1 2 3 4 but could be change at any time.


### Icons:



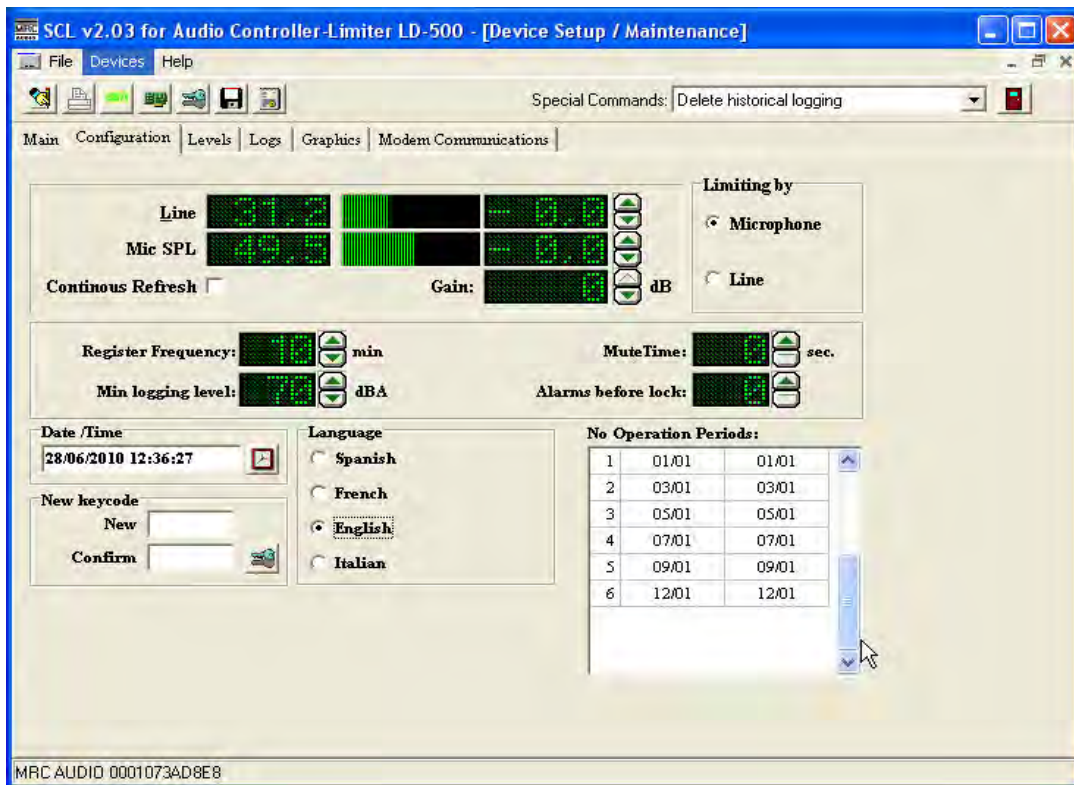
- 1 - Close and save changes
- 2 - Print reports
- 3 - SPL measuring in large screen
- 4 - Reload data from limiter
- 5 - Introduce keycode for setup
- 6 - Export XML Data file
- 7 - Create Installation report
- 8 - Special commands
- 9 - Close with save option


### Special Commands:

- 1 - Delete Historical Log  
Allow deletion of all events stored in Limiter memory.
- 2 - Delete Alarms Counters  
Allow deletion of counters and accumulate times.
- 3 - Unblock the unit  
When the unit is blocked after over passing the number of Level Alarms programmed, we can unblock it with this command.
- 4 - Block the unit  
We can block the sound at any time.

To set values can use the  buttons or double click on desired window to edit the value

In the **Configuration** tab we can adjust the following parameters:



Values of Line or Mic signals by means of  buttons until equals readings. For activate this readings, the **Continuous Refresh** must be checked.

Static and fixed **Gain**.

**Limiting by** Mic or Line

The rate of SPL logging in **Register Frequency**

The **Minimum Logging Level** for SPL

**Mute Time** can be set from 0 s. (Not apply Mute) to 240 s.

**Alarms before lock** is the number of Level Alarms must be occurring before blocking the sound.

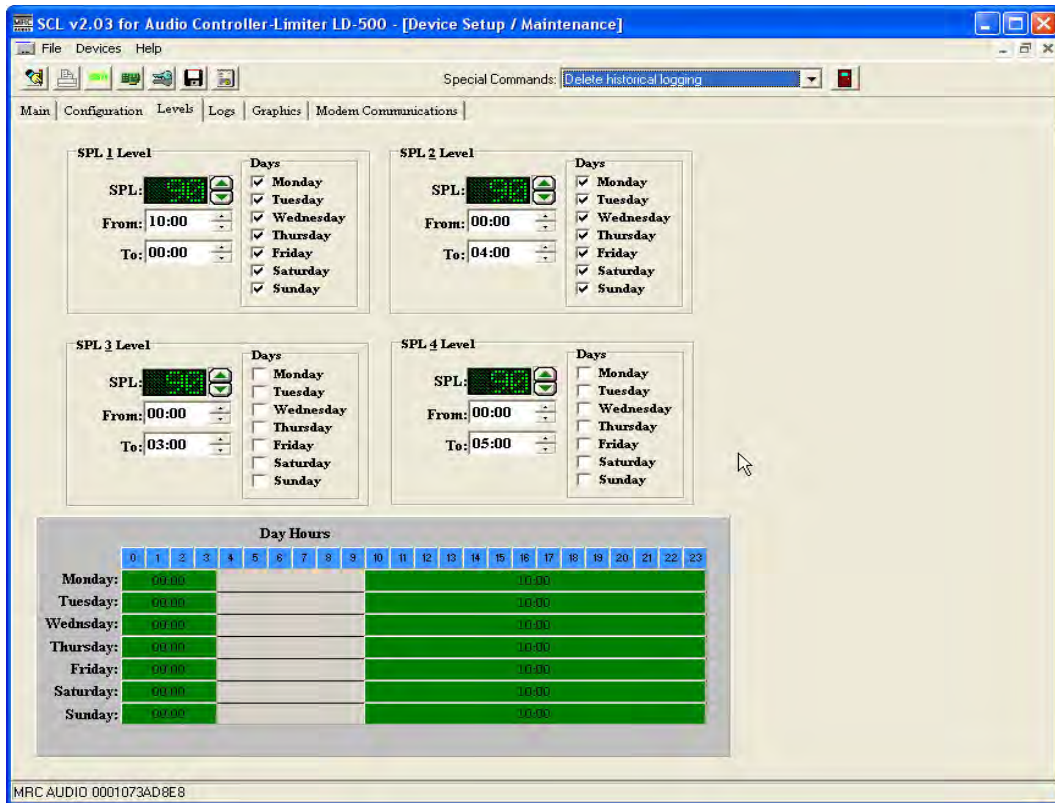
Set the Limiter internal clock to PC time in **Date/Time** window

Set **New Keycode** and confirm. The usable digits will be from 1 to 0 or from 1 to 8 if we want use the front keyboard

**Language** for the LCD front display

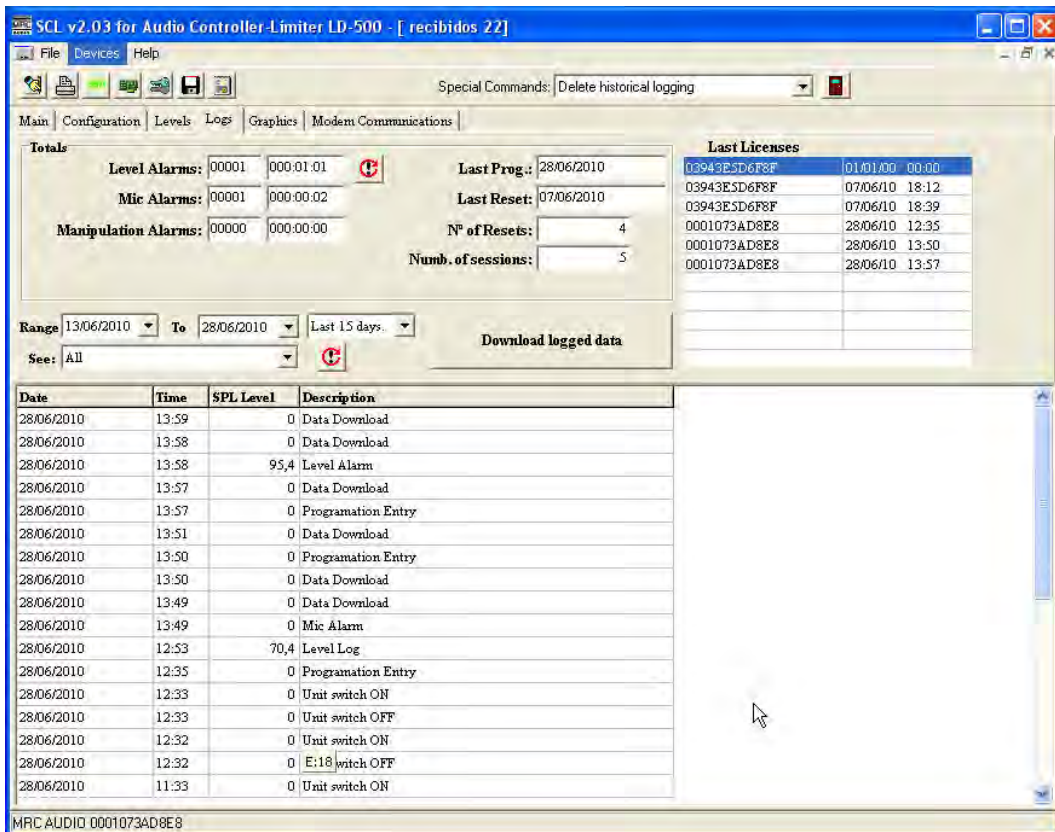
**No operation periods** where limiters acts as a bypass. With double click on desired period, opens a calendar to choose the days for Start and End

In **Levels Tab** we can set all duty time and level




We can set four different duty levels and time periods along 24h and seven days of the week. **The working time period must pass always around 00:00 to take account the different day of week.** If only need a unique level for all 24 hours, then can be settled as 00:00 to 00:00 and operates all 24 hours at same and unique level.

In **Log Tab** we can control all events stored in no volatile memory of Limiter.




To download the stored events, press **Download Logged Data** and will be stored in control computer for further analysis or printing.

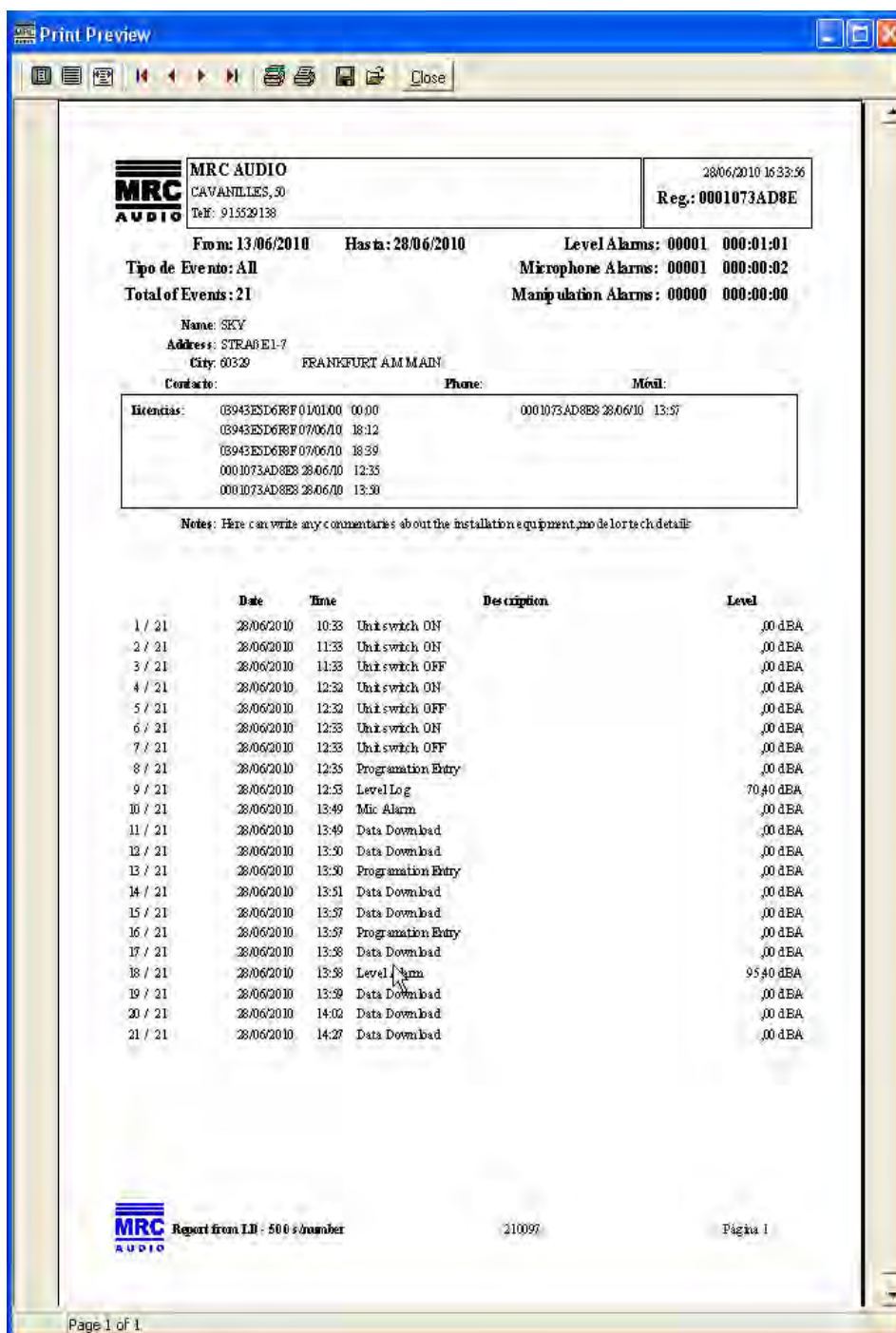
We can analyze all stored events selecting the period time to show or even the type of event desired. Once you analyze the downloaded data and save on your computer is useful delete all data in Limiter memory. In this way we prevent long delay data download in the next inspection. To keep safe all this information is very recommendable make a complete backup copy of the Data folder.

If we need export the complete data of a Limiter we can use the  icon to save it with serial number as default name.

Afterwards and in opposite way you can upload this file in other system with the same SCL software and incorporate it in database as a normal download was made.

To delete some lines of data, we can choose them clicking on each one while pressing Ctrl key. To select several together, clicks on the first one and while pressing Shift key, press direction arrow to select all.

This events list could be printed as report with software manager identificative header and premise data where installed by means of  icon.



**MRC AUDIO**  
CAVANILLES, 30  
Tel: 915529138

28/06/2010 16:33:56  
Reg: 0001073AD8E

From: 13/06/2010 Hasta: 28/06/2010 Level Alarms: 00001 000:01:01  
Tipo de Evento: All Microphone Alarms: 00001 000:00:02  
Total of Events: 21 Manipulation Alarms: 00000 000:00:00

Name: SKY  
Address: STRAUß 7  
City: 60329 FRANKFURT AM MAIN

Contacto: Phone: Móvil:

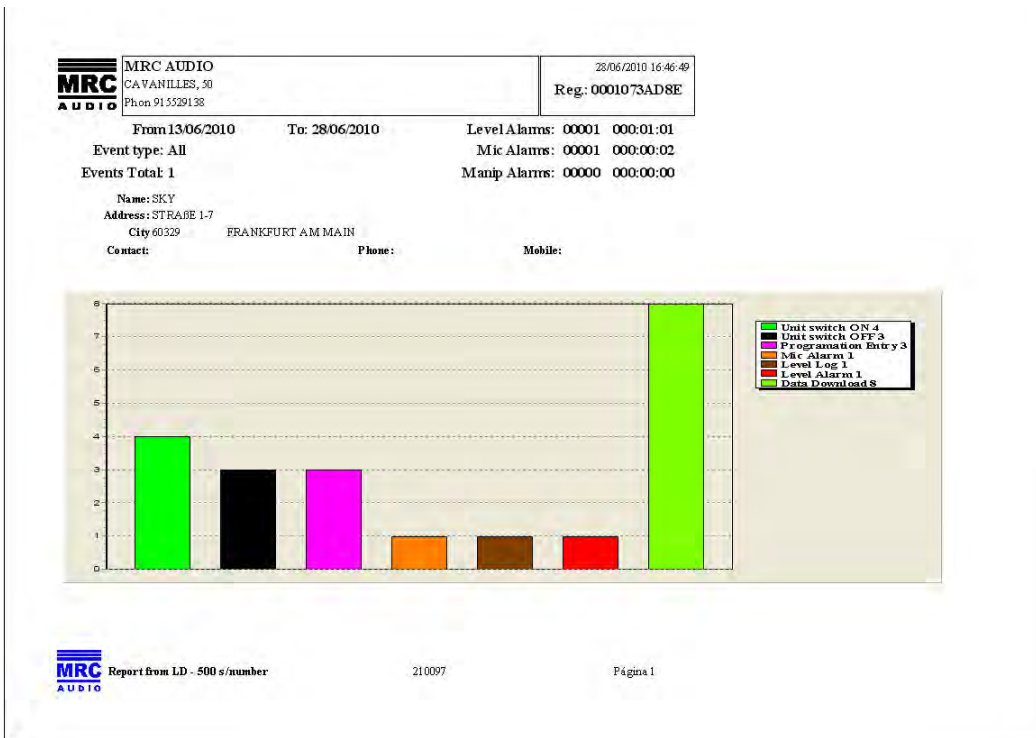
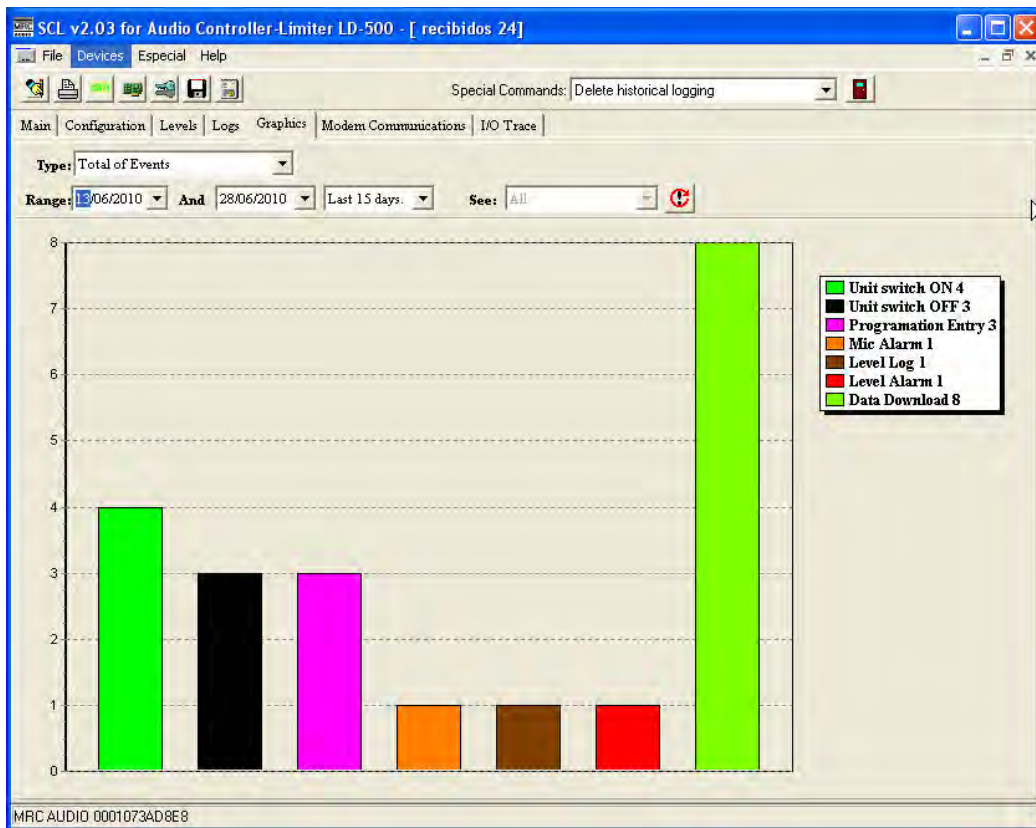
Identities:	03943END6RF 01/01/00	00:00	0001073AD8E8 28/06/10	13:57
	03943END6RF 07/06/10	18:12		
	03943END6RF 07/06/10	18:39		
	0001073AD8E8 28/06/10	12:35		
	0001073AD8E8 28/06/10	13:30		

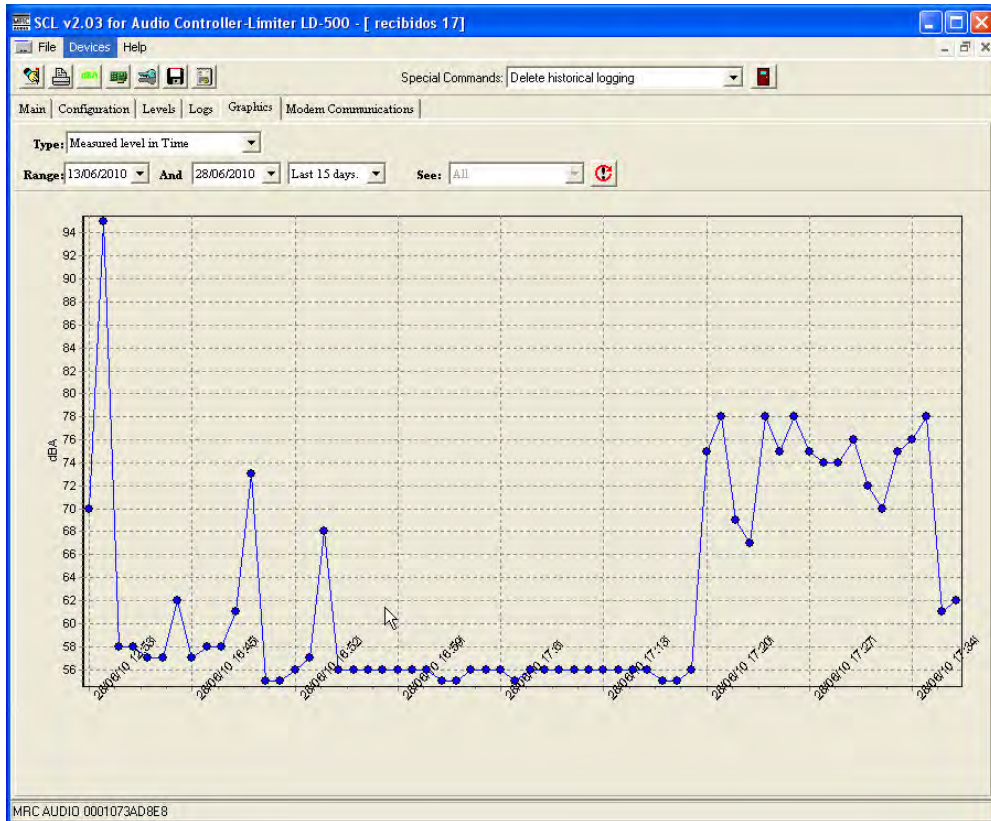
Note: Here can write any commentaries about the installation equipment, model or tech details:

	Date	Time	Description	Level
1 / 21	28/06/2010	10:33	Unit switch ON	,00 dBA
2 / 21	28/06/2010	11:33	Unit switch ON	,00 dBA
3 / 21	28/06/2010	11:33	Unit switch OFF	,00 dBA
4 / 21	28/06/2010	12:32	Unit switch ON	,00 dBA
5 / 21	28/06/2010	12:32	Unit switch OFF	,00 dBA
6 / 21	28/06/2010	12:33	Unit switch ON	,00 dBA
7 / 21	28/06/2010	12:33	Unit switch OFF	,00 dBA
8 / 21	28/06/2010	12:35	Programation Entry	,00 dBA
9 / 21	28/06/2010	12:35	Level Log	70,40 dBA
10 / 21	28/06/2010	13:49	Mic Alarm	,00 dBA
11 / 21	28/06/2010	13:49	Data Download	,00 dBA
12 / 21	28/06/2010	13:50	Data Download	,00 dBA
13 / 21	28/06/2010	13:50	Programation Entry	,00 dBA
14 / 21	28/06/2010	13:51	Data Download	,00 dBA
15 / 21	28/06/2010	13:57	Data Download	,00 dBA
16 / 21	28/06/2010	13:57	Programation Entry	,00 dBA
17 / 21	28/06/2010	13:58	Data Download	,00 dBA
18 / 21	28/06/2010	13:58	Level Alarm	95,40 dBA
19 / 21	28/06/2010	13:59	Data Download	,00 dBA
20 / 21	28/06/2010	14:02	Data Download	,00 dBA
21 / 21	28/06/2010	14:27	Data Download	,00 dBA

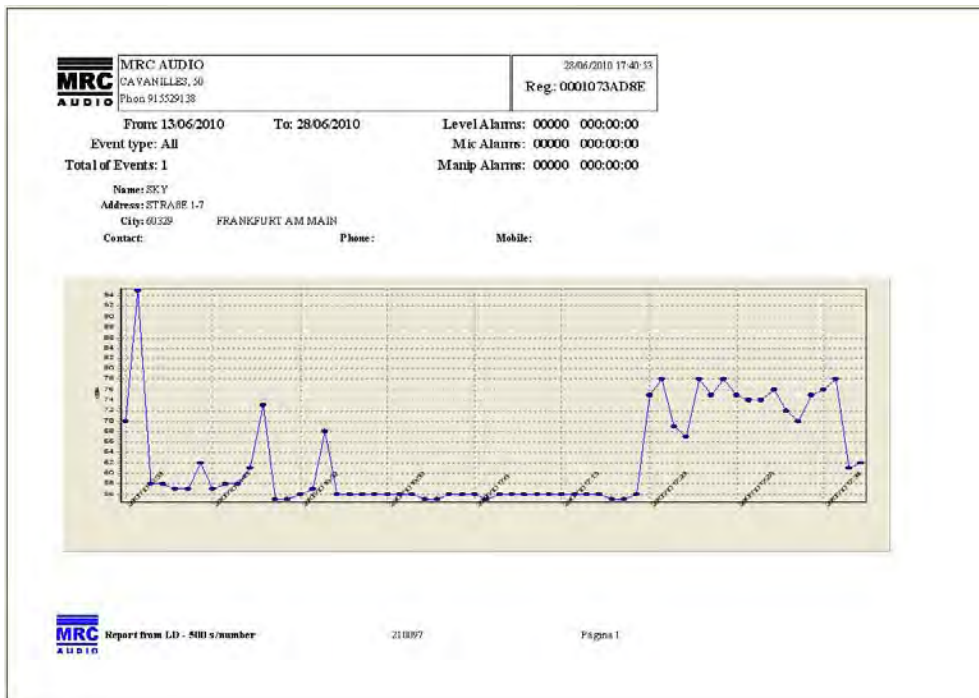
**MRC AUDIO** Report from ID: 500 #number 210099 Página 1

In the same way you can visualize graphics for analysis and printing





In this last screen we can observe the evolution of SPL in place under control. Very useful is the possibility of zoom over a partial zone. Draw a rectangle over the area and to release the zoom view, click left mouse button moving at same time to the left and the original view will be restored. Anyway you can move along the image pressing mouse right button along time direction.



At any time you need, you can visualize the SPL in a large screen with selectable sample time Fast or Slow



[www.mrcaudio.com](http://www.mrcaudio.com)